

An ISO 9001 : 2015
Certified Company



Prince Components

Brass Fitting Components



**Manufacturer & Exporter of High Quality
Brass Fittings & Customized Brass Components**



India's Leading Manufacturers Of High Quality Brass Components & Fittings.

We are located in western part of INDIA in Jamnagar. We started as a small manufacturer doing contract jobs for exporters. Over the years, we gained expertise & we have serviced some of the largest corporations worldwide. Whether a unique item with a onetime requirement or long running contract orders with scheduled deliveries, Prince Components is the right source for the job apart from standard products.

As a company, we focus on providing quality products, service and value to our customers. We emphasis on increasing our facilities, testing procedures & other resources based on our Customer requirements which add value to our customer friendly policy.



- 19+ Years of Experience
- Quality Assurance
- Skilled Employees
- Modern Infrastructure
- Great Support Team
- On Time Delivery

WHY CHOOSE US ?



Our Mission

To find the best export Solution for the customer's particular requirement which results into the creation of long standing commercial relationships built on mutual trust and understanding.



Our Vision

We are constantly striving to achieve excellence in our services. We maintain high ethical and professional standards to stay on top in changing business environment.



Our Values

To continuously improve our products and services, we believe that a perfect understanding of clients need is of crucial importance and also adhere to the concept of corporate social responsibility.



Equal Elbow

SIZE	
1014 x 1014	
1216 x 1216	
1620 x 1620	
2025 x 2025	
2532 x 2532	
3240 x 3240	



Equal Tee

SIZE	
1014 x 1014 x 1014	
1216 x 1216 x 1216	
1620 x 1620 x 1620	
2025 x 2025 x 2025	
2532 x 2532 x 2532	
3240 x 3240 x 3240	



Unequal Union

SIZE	
2025 x 1620	3240 x 2025
2532 x 1620	3240 x 1620
2532 x 2025	2025 x 1216
3240 x 2532	1620 x 1216



Female Elbow

SIZE	
1014 x 1/2"F	2025 x 1"F
1216 x 1/2"F	2025 x 3/4"F
1620 x 1/2"F	2532 x 1.1/4"F
2025 x 1/2"F	2532 x 1"F



Equal Cross Tee

SIZE	
1620 x 1620 x 1620 x 1620	
1216 x 1216 x 1216 x 1216	



Female Union

SIZE	
1216 x 1/2"F	2532 x 1"F
1620 x 1/2"F	2532 x 1.1/4"F
2025 x 1/2"F	1620 x 1"F
1620 x 3/4"F	2025 x 1.1/2"F
2025 x 1"F	3240 x 1.1/2"F
2025 x 3/4"F	



Male Elbow

SIZE
1216 x 1/2"M
1620 x 1/2"M
2025 x 1"M



Equal Union

SIZE
1014 x 1014
1216 x 1216
1620 x 1620
2025 x 2025



Male Union

SIZE	
1216 x 1/2"M	2025 x 3/4"M
1620 x 1/2"M	2532 x 1.1/4"M
1620 x 3/4"M	2532 x 1"M 2532 x 1"M
2025 x 1/2"M	3240 x 1"M
2025 x 1"M	3240 x 1.1/2"M



Unequal Elbow

SIZE	
1620 x 1216	2532 x 2025
2025 x 1216	3240 x 1620
2025 x 1620	3240 x 2025
2532 x 1620	3240 x 2532



Female Tee

SIZE	
1014 x 1/2" F x 1014	2532 x 3/4" x 2532
1216 x 1/2" F x 1216	2532 x 1/2" x 2532
1620 x 1/2" F x 1620	2532 x 1" x 2532
2025 x 1/2" F x 2025	1620 x 3/4" F x 1620
2025 x 1" F x 2025	



Male Tee

SIZE	
1014 x 1/2"M x 1014	
1216 x 1/2"M x 1216	
1620 x 1/2"M x 1620	
2025 x 1/2"M x 2025	
2025 x 1"M x 2025	
2532 x 3/4"M x 2532	
2532 x 1/2"M x 2532	



Unequal Tee

SIZE	
2532 x 1216 x 2532	2025 x 1620 x 1620
3240 x 1620 x 3240	2532 x 1620 x 2532
1620 x 1216 x 1620	2532 x 2025 x 2532
2025 x 1216 x 2025	3240 x 2025 x 3240
2025 x 1620 x 2025	3240 x 2532 x 3240



Wall Plated Female Elbow

SIZE
1014 x 1/2"F
1216 x 1/2"F
1620 x 1/2"F



MALE CONNECTOR (MC)

End Connections	TOD x MPT
Tube OD Size (TOD)	From 1/16" OD to 2" OD (Fractional) From 3mm OD to 38mm OD (Metric)
Male Pipe Thread Size	1/8" to 2" NPT (Taper) Threads (BSPP/ BSPT/ ISO/ (MPT) Metric or any other types upon request)
Type	Double ferrule design with nut (Single ferrule optional)
MOC	MOC SS316 , 304/ Brass/ Alloy 400, 600, C276/ CS/PTFE etc
Model No Designator (*)	MOC-MC-TOD"-MPT"



Male Elbow 90° (Me90)

End Connections	TOD x MPT
Tube OD Size (TOD)	From 1/8" OD to 1.5" OD (Fractional) From 3mm OD to 38mm OD (Metric)
Male Pipe Thread Size (MPT)	1/8" to 1.5" NPT (Taper) Threads (BSPP/ BSPT/ ISO/ Metric or any other types upon request)
Type	Double ferrule design with nut (Single ferrule optional)
MOC	SS316, 304/ Brass/ Alloy 400, 600, C276/ CS/ PTFE etc
Model No Designator (*)	MOC*-ME-TOD*-MPT*



Male Elbow 45° (Me45)

End Connections	TOD x MPT x TOD
Tube OD Size (TOD)	From 1/8" OD to 1.5" OD (Fractional) From 3mm OD to 38mm OD (Metric)
Male Pipe Thread Size (MPT)	1/8" to 1.5" NPT (Taper) Threads (BSPP/ BSPT/ ISO/ Metric or any other types upon request)
Type	Double ferrule design with nut (Single ferrule optional)
MOC	SS316, 304/ Brass/ Alloy 400, 600, C276/ CS/ PTFE etc
Model No Designator (*)	MOC*-MRT- TOD1*-MPT*-TOD2*



Male Run Tee (MRT)

End Connections	TOD x MPT x TOD
Tube OD Size (TOD)	From 1/8" OD to 1.5" OD (Fractional) From 3mm OD to 38mm OD (Metric)
Male Pipe Thread Size (MPT)	1/8" to 1.5" NPT (Taper) Threads (BSPP/ BSPT/ ISO/ Metric or any other types upon request)
Type	Double ferrule design with nut (Single ferrule optional)
MOC	SS316, 304/ Brass/ Alloy 400, 600, C276/ CS/ PTFE etc
Model No Designator (*)	MOC*-MRT- TOD1*-MPT*-TOD2*



Male Branch Tee (MBT)

End Connections	TOD x TOD x MPT
Tube OD Size (TOD)	From 1/8" OD to 1.5" OD (Fractional) From 3mm OD to 38mm OD (Metric)
Male Pipe Thread Size (MPT)	1/8" to 1.5" NPT (Taper) Threads (BSPP/ BSPT/ ISO/ Metric or any other types upon request)
Type	Double ferrule design with nut (Single ferrule optional)
MOC	SS316, 304/ Brass/ Alloy 400, 600, C276/ CS/ PTFE etc
Model No Designator (*)	MOC*-MBT- TOD1*-TOD2*-MPT*



Male Bulkhead Connector (MBC)

End Connections	TOD x MPT
Tube OD Size (TOD)	From 1/8" OD to 2" OD (Fractional) From 3mm OD to 38mm OD (Metric)
Male Pipe Thread Size (MPT)	1/8" to 2" NPT (Taper) Threads (BSPP/ BSPT/ ISO/ Metric or any other types upon request)
Type	Double ferrule design with nut (Single ferrule optional)
MOC	SS316, 304/ Brass/ Alloy 400, 600, C276/ CS/ PTFE etc
Model No Designator (*)	MOC*-MBH-TOD*-MPT*



Male Tube Adaptor (MTA)

End Connections	TOD x MPT
Tube OD Size (TOD)	1/8" to 2" NPT (Taper) Threads (BSPP/ BSPT/ ISO/ Metric or any other Types Upon Request)
Male Pipe Thread Size (MPT)	From 1/8" OD to 2" OD (Fractional) From 3mm OD to 38mm OD (Metric)
Type	Tube plain end suitable for swaging ferrules
MOC	SS316, 304/ Brass/ Alloy 400, 600, C276/ CS/ PTFE etc
Model No Designator (*)	MOC*-MTA-MPT*-TPE*



Female Connector (FC)

End Connections	TOD x FPT
Tube OD Size (TOD)	From 1/16" OD to 2" OD (Fractional) From 3mm OD to 38mm OD (Metric)
Female Pipe Thread Size (FPT)	1/8" to 1.5" NPT (Taper) Threads (BSPP/ BSPT/ ISO/ Metric or any other types upon request)
Type	Double ferrule design with nut (Single ferrule optional)
MOC	SS316, 304/ Brass/ Alloy 400, 600, C276/ CS/ PTFE etc
Model No Designator (*)	MOC*-FC-TOD*-FPT*



Female Elbow 90° (Fe90)

End Connections	TOD x MPT
Tube OD Size (TOD)	From 1/16" OD to 2" OD (Fractional) From 3mm OD to 38mm OD (Metric)
Male Pipe Thread Size (MPT)	1/8" to 2" NPT (Taper) Threads (BSPP/ BSPT/ ISO/ Metric or any other types upon request)
Type	Double ferrule design with nut (Single ferrule optional)
MOC	MOC SS316, 304/ Brass/ Alloy 400, 600, C276/ CS/ PTFE etc
Model No Designator (*)	MOC-MC-TOD"-MPT"



Female Run Tee (FRT)

End Connections	TOD x MPT
Tube OD Size (TOD)	From 1/8" OD to 1.5" OD (Fractional) From 3mm OD to 38mm OD (Metric)
Male Pipe Thread Size (MPT)	1/8" to 1.5" NPT (Taper) Threads (BSPP/ BSPT/ ISO/ Metric or any other types upon request)
Type	Double ferrule design with nut (Single ferrule optional)
MOC	SS316, 304/ Brass/ Alloy 400, 600, C276/ CS/ PTFE etc
Model No Designator (*)	MOC*-ME-TOD*-MPT*



Female Branch Tee (FBT)

End Connections	TOD x MPT x TOD
Tube OD Size (TOD)	From 1/8" OD to 1.5" OD (Fractional) From 3mm OD to 38mm OD (Metric)
Male Pipe Thread Size (MPT)	1/8" to 1.5" NPT (Taper) Threads (BSPP/ BSPT/ ISO/ Metric or any other types upon request)
Type	Double ferrule design with nut (Single ferrule optional)
MOC	SS316, 304/ Brass/ Alloy 400, 600, C276/ CS/ PTFE etc
Model No Designator (*)	MOC*-MRT- TOD1*-MPT*-TOD2*



Female Bulkhead Connector (FBC)

End Connections	TOD x MPT x TOD
Tube OD Size (TOD)	From 1/8" OD to 1.5" OD (Fractional) From 3mm OD to 38mm OD (Metric)
Male Pipe Thread Size (MPT)	1/8" to 1.5" NPT (Taper) Threads (BSPP/ BSPT/ ISO/ Metric or any other types upon request)
Type	Double ferrule design with nut (Single ferrule optional)
MOC	SS316, 304/ Brass/ Alloy 400, 600, C276/ CS/ PTFE etc
Model No Designator (*)	MOC*-MRT- TOD1*-MPT*-TOD2*



Female True Adaptor (FTA)

End Connections	TOD x TOD x MPT
Tube OD Size (TOD)	From 1/8" OD to 1.5" OD (Fractional) From 3mm OD to 38mm OD (Metric)
Male Pipe Thread Size (MPT)	1/8" to 1.5" NPT (Taper) Threads (BSPP/ BSPT/ ISO/ Metric or any other types upon request)
Type	Double ferrule design with nut (Single ferrule optional)
MOC	SS316, 304/ Brass/ Alloy 400, 600, C276/ CS/ PTFE etc
Model No Designator (*)	MOC*-MBT- TOD1*-TOD2*-MPT*



Union Tube Straight (UTS)

End Connections	TOD x MPT
Tube OD Size (TOD)	From 1/8" OD to 2" OD (Fractional) From 3mm OD to 38mm OD (Metric)
Male Pipe Thread Size (MPT)	1/8" to 2" NPT (Taper) Threads (BSPP/ BSPT/ ISO/ Metric or any other types upon request)
Type	Double ferrule design with nut (Single ferrule optional)
MOC	SS316, 304/ Brass/ Alloy 400, 600, C276/ CS/ PTFE etc
Model No Designator (*)	MOC*-MBH-TOD*-MPT*



Elbow Union 90° (Eu90)

End Connections	TOD x MPT
Tube OD Size (TOD)	1/8" to 2" NPT (Taper) Threads (BSPP/ BSPT/ ISO/ Metric or any other Types Upon Request)
Male Pipe Thread Size (MPT)	From 1/8" OD to 2" OD (Fractional) From 3mm OD to 38mm OD (Metric)
Type	Tube plain end suitable for swaging ferrules
MOC	SS316, 304/ Brass/ Alloy 400, 600, C276/ CS/ PTFE etc
Model No Designator (*)	MOC*-MTA-MPT*-TPE*



Tee Union (TU)

End Connections	TOD x FPT
Tube OD Size (TOD)	From 1/16" OD to 2" OD (Fractional) From 3mm OD to 38mm OD (Metric)
Female Pipe Thread Size (FPT)	1/8" to 1.5" NPT (Taper) Threads (BSPP/ BSPT/ ISO/ Metric or any other types upon request)
Type	Double ferrule design with nut (Single ferrule optional)
MOC	SS316, 304/ Brass/ Alloy 400, 600, C276/ CS/ PTFE etc
Model No Designator (*)	MOC*-FC-TOD*-FPT*



Cross Union (CU)

End Connections	TOD x TOD x TOD x TID
Tube OD Size (TOD)	From 1/8" OD to 2" OD (Fractional) From 3mm OD to 38mm OD (Metric)
Type	Double ferrule design with nut (Single ferrule optional)
MOC	SS316, 304/ Brass/ Alloy 400, 600, C276/ CS/ PTFE etc
Model No Designator (*)	MOC*-TU-TOD1*-TOD2*-TOD3*-TOD4*



Bulkhead Union Tube (BUT)

End Connections	TOD x TOD
Tube OD Size (TOD)	From 1/8" OD to 2" OD (Fractional) From 3mm OD to 38mm OD (Metric)
Type	Double ferrule design with nut (Single ferrule optional)
MOC	SS316, 304/ Brass/ Alloy 400, 600, C276/ CS/ PTFE etc
Model No Designator (*)	MOC*-BHU-TOD1*-TOD2*



Reducer Tube (RT)

End Connections	TOD x TPE
Tube OD Size (TOD)	From 1/8" OD to 2" OD (Fractional) From 3mm OD to 48mm OD (Metric)
Tube Plain End Size (TPE)	From 1/8" OD to 2" OD (Fractional) From 3mm OD to 38mm OD (Metric)
Type	Tube plain end suitable for swaging ferrules
MOC	SS316, 304/ Brass/ Alloy 400, 600, C276/ CS/ PTFE etc
Model No Designator (*)	MOC*-RT-TOD*-TPE*



Pipe Weld Butt Connector (PBWC)

End Connections	TOD x PBW
Tube OD Size (TOD)	From 1/8" OD to 2" OD (Fractional) From 3mm OD to 38mm OD (Metric)
Pipe Butt Weld End Size (PBW)	From 1/8" NB to 1.5" NB
Type	Double ferrule design with nut (Single ferrule optional)
MOC	SS316, 304/ Alloy 400, 600, C276/ CS etc
Model No Designator (*)	MOC*-PBWC-TOD*-PBW*



End Closure For Tube (ECT)

End Connections	TOD
Tube OD Size (TOD)	From 1/8" OD to 2" OD (Fractional) From 3mm OD to 38mm OD (Metric)
Type	Double ferrule design with nut (Single ferrule optional)
MOC	SS316, 304/ Brass/ Alloy 400, 600, C276/ CS/ PTFE etc
Model No Designator (*)	MOC*-ET-TOD*



End Closure For Fitting (ECF)

End Connections	TOD
Tube OD Size (TOD)	From 1/8" OD to 2" OD (Fractional) From 3mm OD to 38mm OD (Metric)
Type	Double ferrule design with nut (Single ferrule optional)
MOC	SS316, 304/ Brass/ Alloy 400, 600, C276/ CS/ PTFE etc
Model No Designator (*)	MOC*-EF-TOD*



Spare Nut (SN)

End Connections	TOD
Tube OD Size (TOD)	From 1/16" OD to 2" OD (Fractional) From 3mm OD to 38mm OD (Metric)
Type	Double ferrule design with nut (Single ferrule optional)
MOC	SS316, 304/ Brass/ Alloy 400, 600, C276/ CS/ PTFE etc
Model No Designator (*)	MOC*-SN-TOD*



Spare Ferrule Set (SF)

End Connections	TOD
Tube OD Size (TOD)	From 1/16" OD to 2" OD (Fractional) From 3mm OD to 38mm OD (Metric)
Type	Spare double ferrule set (Single ferrule optional)
MOC	SS316, 304/ Brass/ Alloy 400, 600, C276/ CS/ PTFE etc
Model No Designator (*)	MOC*-SF-TOD*



Needle Valve (NV)

End Connections	MPT/ FPT
PIPE THREAD SIZE (MPT/ FPT)	1/8" to 2" NPT (Taper) Threads (BSPP/ BSPT/ ISO/ Metric or any other types upon request)
TEST PRESSURE	Up to 10000 psi
GLAND PACKING	Standard PTFE (Grafoil for high temp)
MOC	SS316, 304/ Brass/ Alloy 400, 600, C276/ CS/ PTFE etc
Model No Designator (*)	MOC*-NV-IN*-OUT*



Needle Valve Tube (NVT)

End Connections	MPT/ FPT
PIPE THREAD SIZE (MPT/ FPT)	1/8" to 2" NPT (Taper) Threads (BSPP/ BSPT/ ISO/ Metric or any other types upon request)
TEST PRESSURE	Up to 10000 psi
GLAND PACKING	Standard PTFE (Grafoil for high temp)
MOC	SS316, 304/ Brass/ Alloy 400, 600, C276/ CS/ PTFE etc
Model No Designator (*)	MOC*-NV-IN*-OUT*



Needle Valve Angle (NVA)

End Connections	TOD/ FPT/ MPT
TUBE OD SIZE (TOD)	From 1/8" OD to 2" OD (Fractional) From 3mm OD to 38mm OD (Metric)
PIPE THREAD SIZE (MPT/ FPT)	1/8" to 2" NPT (Taper) Threads (BSPP/ BSPT/ ISO/ Metric or any other types upon request)
TEST PRESSURE	Up to 10000 psi
GLAND PACKING	Standard PTFE (Grafoil for high temp)
MOC	SS316, 304/ Brass/ Alloy 400, 600, C276/ CS etc



Needle Valve With Drain (NVD)

End Connections	TOD/ FPT/ MPT
TUBE OD SIZE (TOD)	From 1/8" OD to 2" OD (Fractional) From 3mm OD to 38mm OD (Metric)
PIPE THREAD SIZE (MPT/ FPT)	1/8" to 2" NPT (Taper) Threads (BSPP/ BSPT/ ISO/ Metric or any other types upon request)
TEST PRESSURE	Up to 10000 psi
GLAND PACKING	Standard PTFE (Grafoil for high temp)
MOC	SS316, 304/ Brass/ Alloy 400, 600, C276/ CS/ PTFE etc



Needle Valve Lockable (NVL)

End Connections	TOD/ FPT/ MPT
TUBE OD SIZE (TOD)	From 1/8" OD to 1" OD (Fractional) From 3mm OD to 25mm OD (Metric)
LOCKING ARRANGEMENT	By Allen Screw
PACKING	PTFE
TEST PRESSURE	Up to 10000 psi
GLAND PACKING	Standard PTFE (Grafoil for high temp)



Ball Valve (BV)

End Connections	TOD/ FPT/ MPT
TUBE OD SIZE (TOD)	From 1/4" OD to 1" OD (Fractional) From 6mm OD to 25mm OD (Metric)
PACKING	PTFE
TEST PRESSURE	Up to 2000 psi.
GLAND PACKING	Standard PTFE (Grafoil for high temp)
MOC	SS316, 304/ Brass/ Alloy 400, 600, C276/ CS etc



Ball Valve High Pressure (BVHP)

End Connections	TOD/ FPT/ MPT
TUBE OD SIZE (TOD)	From 1/4" OD to 1" OD (Fractional) From 6mm OD to 25mm OD (Metric)
PACKING	PTFE
TEST PRESSURE	Up to 2000 psi.
GLAND PACKING	Standard PTFE (Grafoil for high temp)
MOC	SS316, 304/ Brass/ Alloy 400, 600, C276/ CS etc



Ball Valve Panel Mounting (BVPM)

End Connections	TOD/ FPT/ MPT
TUBE OD SIZE (TOD)	From 1/8" OD to 1" OD (Fractional) From 3mm OD to 25mm OD (Metric)
PIPE THREAD SIZE (MPT/ FPT)	1/8" to 1" NPT (Taper) Threads (BSPP/ BSPT/ ISO/ Metric or any other types upon request)
PACKING	PTFE (Optional PEEK)
TEST PRESSURE	Up to 10000 psi.
MOC	SS316, 304/ Brass/ Alloy 400, 600, C276/ CS etc
Model No Designator (*)	MOC*-BVPM-IN*-OUT*



Three Way Ball Valve (3BV)

End Connections	TOD/ FPT/ MPT
TUBE OD SIZE (TOD)	From 1/8" OD to 1" OD (Fractional) From 3mm OD to 25mm OD (Metric)
PIPE THREAD SIZE (MPT/ FPT)	1/8" to 1" NPT (Taper) Threads (BSPP/ BSPT/ ISO/ Metric or any other types upon request)
PACKING	PTFE (Optional PEEK)
TEST PRESSURE	Up to 10000 psi.
MOC	SS316, 304/ Brass/ Alloy 400, 600, C276/ CS etc



Multi Way Ball Valve (MBV)

End Connections	TOD/ FPT/ MPT
TUBE OD SIZE (TOD)	From 1/8" OD to 1" OD (Fractional) From 3mm OD to 25mm OD (Metric)
PIPE THREAD SIZE (MPT/ FPT)	1/8" to 1" NPT (Taper) Threads (BSPP/ BSPT/ ISO/ Metric or any other types upon request)
PACKING	PTFE
TEST PRESSURE	Up to 3000 psi.
MOC	SS316, 304/ Brass/ Alloy 400, 600, C276/ CS etc



Non Return Valve (NRV)

End Connections	TOD/ FPT/ MPT
TUBE OD SIZE (TOD)	From 1/8" OD to 2" OD (Fractional) From 3mm OD to 38mm OD (Metric)
PIPE THREAD SIZE (MPT/ FPT)	1/8" to 2" NPT (Taper) Threads (BSPP/ BSPT/ ISO/ Metric or any other types upon request)
PACKING	PTFE
TEST PRESSURE	Up to 10000 psi



Pressure Relief Valve (PRV)

End Connections	TOD/ FPT/ MPT
TUBE OD SIZE (TOD)	From 1/4" OD to 1" OD (Fractional) From 6mm OD to 25mm OD (Metric)
PIPE THREAD SIZE (MPT/ FPT)	1/8" to 1" NPT (Taper) Threads (BSPP/ BSPT/ ISO/ Metric or any other types upon request)
PACKING	PTFE
TEST PRESSURE	As per Specification



Quick Release Coupling (QRC)

END CONNECTIONS	TOD/ FPT/ MPT
TUBE OD SIZE (TOD)	From 1/4" OD to 1" OD (Fractional) From 6mm OD to 25mm OD (Metric)
PIPE THREAD SIZE (MPT/ FPT)	1/8" to 1" NPT (Taper) Threads (BSPP/ BSPT/ ISO/ Metric or any other types upon request)
MODEL NO DESIGNATOR (*)	MOC*-QRC-IN*-OUT*
TYPE	Single Check Type/ Double Check Type
MOC	SS316, 304/ Brass/ Alloy 400, 600, C276/ CS etc



Swivel Adaptor (SWA)

END CONNECTIONS	FPT/ MPT
PIPE THREAD SIZE (MPT/ FPT)	1/8" to 2" NPT (Taper) Threads (BSPP/ BSPT/ ISO/ Metric or any other types upon request)
TEST PRESSURE	Up to 5000 psi
SEAL RING	Viton/ Nitrile/ Silicon
MOC	SS316, 304/ Brass/ Alloy 400, 600, C276/ CS etc
MODEL NO DESIGNATOR (*)	MOC*-SWA-IN*-OUT*



Gauge Cocks (GC)

END CONNECTIONS	TOD/ FPT/ MPT
PIPE THREAD SIZE (MPT/ FPT)	1/8" to 1" NPT (Taper) Threads (BSPP/ BSPT/ ISO/ Metric or any other types upon request)
TEST PRESSURE	Up to 450 psi
TYPE	2 WAY or 3 WAY
MOC	SS316, 304/ Brass/ Alloy 400, 600, C276/ CS etc
PACKING/ SEALING	PTFE



2 Valve Manifold R Type (2VMR)

End Connections	FPT
Female Pipe Thread Size (FPT)	1/4" to 1/2" NPT (Taper) Threads (BSPP/ BSPT/ ISO/ Metric or any other types upon request)
TEST PRESSURE	Up to 10000 psi.
PACKING	PTFE (Grafoil for high temp)
Type	Remote Mounting Type
MOC	SS316, 304/ Brass/ Alloy 400, 600, C276/ CS/ PTFE etc
Model No Designator (*)	MOC*-2VMR-IN*-OUT*-DRAIN*



2 Valve Manifold T Type (2VMT)

End Connections	FPT x Transmitter Flange
Female Pipe Thread Size (FPT)	1/4" to 1/2" NPT (Taper) Threads (BSPP/ BSPT/ ISO/ Metric or any other types upon request)
OUT/ PROCESS CONN	Transmitter Flange (TF)
TEST PRESSURE	Up to 10000 psi.
PACKING	PTFE (Grafoil for high temp)
Type	Transmitter Mounting Type (PTFE Seal Ring & 2 Bolts)
MOC	SS316, 304/ Brass/ Alloy 400, 600, C276/ CS/ PTFE etc



3 Valve Manifold R Type (3VMR)

End Connections	FPT
Female Pipe Thread Size (FPT)	1/4" to 1/2" NPT (Taper) Threads (BSPP/ BSPT/ ISO/ Metric or any other types upon request)
TEST PRESSURE	Up to 10000 psi.
PACKING	PTFE (Grafoil for high temp)
Type	Remote Mounting Type
MOC	SS316, 304/ Brass/ Alloy 400, 600, C276/ CS/ PTFE etc
Model No Designator (*)	MOC*-3VMR-IN*-OUT*



3 Valve Manifold H Type (3VMT)

End Connections	FPT x Transmitter Flange
Female Pipe Thread Size (FPT)	1/4" to 1/2" NPT (Taper) Threads (BSPP/ BSPT/ ISO/ Metric or any other types upon request)
OUT/ PROCESS CONN	Transmitter Flange (TF)
TEST PRESSURE	Up to 10000 psi
PACKING	PTFE (Grafoil for high temp)
Type	Transmitter Mounting Type (PTFE Seal Ring & 4 Bolts)
MOC	SS316, 304/ Brass/ Alloy 400, 600, C276/ CS/ PTFE etc



3 Valve Manifold T Type (3VMH)

End Connections	Transmitter Flange
TEST PRESSURE	Up to 10000 psi
PACKING	PTFE (Grafoil for high temp)
Type	Transmitter Mounting Type (PTFE Seal Ring & 4 Bolts)
MOC	SS316, 304/ Brass/ Alloy 400, 600, C276/ CS/ PTFE etc
Model No Designator (*)	MOC*-3VMH-TF-TF



5 Valve Manifold R Type (5VMR)

End Connections	FPT
Female Pipe Thread Size (FPT)	1/4" to 1/2" NPT (Taper) Threads (BSPP/ BSPT/ ISO/ Metric or any other types upon request)
TEST PRESSURE	Up to 10000 psi.
PACKING	PTFE (Grafoil for high temp)
Type	Remote Mounting Type
MOC	SS316, 304/ Brass/ Alloy 400, 600, C276/ CS/ PTFE etc
Model No Designator (*)	MOC*-5VMR-IN*-OUT*-DRAIN*



5 Valve Manifold T Type (5VMT)

End Connections	FPT x Transmitter Flange
Female Pipe Thread Size (FPT)	1/4" to 1/2" NPT (Taper) Threads (BSPP/ BSPT/ ISO/ Metric or any other types upon request)
OUT/ PROCESS CONN	Transmitter Flange (TF)
TEST PRESSURE	Up to 10000 psi.
PACKING	PTFE (Grafoil for high temp)
Type	Transmitter Mounting Type (PTFE Seal Ring & 4 Bolts)
MOC	SS316, 304/ Brass/ Alloy 400, 600, C276/ CS/ PTFE etc



Air Headers (Air Manifolds)

End Connections	TOD/ FPT/ MPT
TEST PRESSURE	Standard 300 psi (High Pressure Test offered)
TO DISTRIBUTE COMPRESSED AIR	
TUBE OD SIZE (TOD)	From 1/4" OD to 1" OD (Fractional) From 6mm OD to 25mm OD (Metric)
PIPE THREAD SIZE (FPT/ MPT)	1/8" to 2" NPT (Taper) Threads (BSPP/ BSPT/ ISO/ Metric or any other Types Upon Request)
HEADER PIPE SIZE	From 1" to 4" (Seamless or ERW) Pipe
THICKNESS	As per Spec such as Sch.40/ Sch.80/ Sch.160/ C Class
INLET	A) RF/ FF Flange (ANSI B 16.5) 1/2" to 3" or B) With Ball Valve of Size 1/4" to 2" or C) With Flange & Valve Both at inlet or D) With Valve & Three Piece Union at Inlet
OUTLET/ DRAIN	A) Needle Valves (CS/ Brass/ SS304/ SS316 etc.) B) Ball Valves (CS/ Brass/ SS304/ SS316 etc.) C) Pipe Male/ Female Open Threads
OPPOSITE SIDES OUTLET PATTERN	Parallel or Zig Zag Distance between Two outlets to be specified. Outlet Nipple Length to be specified.



Pipe Elbow Screwed / SW (PES)

End Connections	FPT/ SW
SOCKET WELD PIPE SIZE (SW)	1/8" to 3" NB
FEMALE PIPE THREAD SIZE (FPT)	1/8" to 2" NPT (Taper) Threads (BSPP/ BSPT/ ISO/ Metric or any other types upon request)
TYPE	Round as per ANSI B 16.11.
PRESSURE CLASS	Up To 9000 psi
MOC	SS316, 304/Alloy 400, 600, C276/ CS/ AS etc
Model No Designator (*)	MOC*-PE-SIZE1*-SIZE2*-Class



Pipe Tee Screwed / SW (PTS)

End Connections	FPT/ SW
SOCKET WELD PIPE SIZE (SW)	1/8" to 3" NB
PIPE THREAD SIZE (MPT / FPT)	1/8" to 2" NPT (Taper) Threads (BSPP / BSPT / ISO / Metric or any other types upon request)
TYPE	Round as per ANSI B 16.11.
PRESSURE CLASS	Up To 9000 psi
MOC	SS316, 304/Alloy 400, 600, C276/ CS/ AS etc
Model No Designator (*)	MOC*-PT-SIZE1*-SIZE2*-Class



Pipe Union Screwed (PUS)

End Connections	FPT / MPT / SW
SOCKET WELD PIPE SIZE (SW)	1/8" to 2" NB
PIPE THREAD SIZE (MPT / FPT)	1/8" to 2" NPT (Taper) Threads (BSPP / BSPT / ISO / Metric or any other types upon request)
TYPE	Soft Seal type or Metal to Metal Seal Type
TEST PRESSURE	Up to 9000 psi
SEAL RING	Viton/ Nitrile/ PTFE
MOC	SS316, 304/ Brass/ Alloy 400, 600, C276/ CS etc



Flanges

TYPE	Socket Weld, Screwed, Slip On, Blind, Weld Neck, Special
FACE TYPE	RF / FF / Tongue & Groove Type
SIZE / CLASS	Up to 24" / 150# to 2500#
SPECIFICATION	ANSI B 16.5
SEALING SPECIAL FLANGES	Flat Face, Raised Face, Tongue & Groove
MOC	SS316, 304 / Alloy 400, 600, C276 / PTFE / CS / AS etc



Condensate / Seal Pot (CP)

END CONNECTIONS	FPT / SW
PIPE SIZE	1.5" to 4". Sch.40 to Sch. XXS
PIPE THREAD END CONN (FPT)	1/4" to 2" NPT (Up to 9000 psi) (BSPP / BSPT / ISO / Metric or any other types upon request)
DRAIN PLUGS	Hex plugs provided optionally Length of Pipe / Pipe Schedule to be specified.
SOCKET WELD END CONN (SW)	1/4" to 2" NB (up to 9000 psi)
TYPE	3 Way / 4 Way. IBR Certificate Optional
MOC	SS316, 304 / Alloy 400, 600, C276 / CS / AS etc.



Hex Cap (HC)

End Connections	FPT
Type	Hexagonal
TEST PRESSURE	Up to 10000 psi
MOC	SS316, 304/ Brass/ Alloy 400, 600, C276/ CS/ PTFE etc
Model No Designator (*)	MOC*-HCP-FPT*



Elbow Female Hex (EFH)

End Connections	FPT x FPT
Type	Hexagonal. 90 Degree Reducing elbows in all combinations available
TEST PRESSURE	Up to 10000 psi
MOC	SS316, 304/ Brass/ Alloy 400, 600, C276/ CS/ PTFE etc
Model No Designator (*)	MOC*-HEF-MPT1*-MPT2*



Tee Female Hex (TFH)

End Connections	FPT x FPT x FPT
FEMALE PIPE THREAD SIZE (FPT)	1/8" to 2" NPT (Taper) Threads (BSPP/ BSPT/ ISO/ Metric or any other types upon request) Reducing tees in all combinations available. Tees with Male Female threads upon request
TEST PRESSURE	Up to 10000 psi
MOC	SS316, 304/ Brass/ Alloy 400, 600, C276/ CS/ PTFE etc
Model No Designator (*)	MOC*-HTF-FPT1*-FPT2*-FPT3*



Cross Female Hex (CFH)

End Connections	FPT x FPT x FPT x FPT
FEMALE PIPE THREAD SIZE (FPT)	1/8" to 2" NPT (Taper) Threads (BSPP/ BSPT/ ISO/ Metric or any other types upon request) Reducing cross in all combinations available. Cross with Male Female threads upon request
TEST PRESSURE	Up to 10000 psi
MOC	SS316, 304/ Brass/ Alloy 400, 600, C276/ CS/ PTFE etc
Model No Designator (*)	MOC*-HCF-FPT1*-FPT2*-FPT3*-FPT4*



Hex Reducer (HR)

End Connections	MPT x FPT
PIPE THREAD SIZE (MPT/FPT)	1/8" to 2" NPT (Taper) Threads (BSPP/ BSPT/ ISO/ Metric or any other types upon request)
TYPE	Hexagonal. All combinations available
LENGTH	Standard short length (For specific length please inform)
TEST PRESSURE	Up to 10000 psi
MOC	SS316, 304/ Brass/ Alloy 400, 600, C276/ CS/ PTFE etc
Model No Designator (*)	MOC*-HR-MPT*-FPT*



Hex Adaptor Male X Female (HA)

End Connections	MPT x FPT
PIPE THREAD SIZE (MPT/FPT)	1/8" to 2" NPT (Taper) Threads (BSPP/ BSPT/ ISO/ Metric or any other types upon request)
TYPE	Hexagonal. All combinations available
LENGTH	Standard short length (For specific length please inform)
TEST PRESSURE	Up to 10000 psi
MOC	SS316, 304/ Brass/ Alloy 400, 600, C276/ CS/ PTFE etc
Model No Designator (*)	MOC*-HA-MPT*-FPT*



Elbow Male Female Hex (EMFH)

End Connections	MPT x FPT
PIPE THREAD SIZE (MPT/FPT)	1/8" to 1.5" NPT (Taper) Threads (BSPP/ BSPT/ ISO/ Metric or any other types upon request)
TYPE	Hexagonal. 90 degree Reducing elbows in all combinations available
TEST PRESSURE	Up to 10000 psi
MOC	SS316, 304/ Brass/ Alloy 400, 600, C276/ CS/ PTFE etc
Model No Designator (*)	MOC*-HEMF-MPT*-FPT*



Pipe Nipple (PN)

End Connections	MPT/ PLAIN
MALE PIPE THREAD SIZE (MPT)	1/8" to 3" NPT (Taper) Threads (BSPP/ BSPT/ ISO/ Metric or any other types upon request)
TYPE	Pipe Nipple. Seamless. Threaded Both Ends (TBE), Threaded One End (TOE), Plain Both Ends (PBE) Length to be specified. Pipe Schedule/ Thickness to be specified.
MOC	SS316, 304/ Alloy 400, 600, C276/ CS/ AS/ PTFE etc
Model No Designator (*)	MOC*-PN-Size*-Length*-Type*-Sch



Pipe Coupling Screwed (PCS)

End Connections	FPT x FPT
FEMALE PIPE THREAD SIZE (FPT)	1/8" to 2" NPT (Taper) Threads (BSPP/ BSPT/ ISO/ Metric or any other types upon request)
TYPE	Round as per ANSI B 16.11. Reducing couplings in all combinations available
PRESSURE CLASS	Up To 9000 psi
MOC	SS316, 304/Alloy 400, 600, C276/ CS/ AS/ PTFE etc
Model No Designator (*)	MOC*-PCS-FPT1*-FPT2*-Class



Pipe Coupling Socket Weld (PCSW)

End Connections	SW x SW
PIPE SOCKET WELD SIZE (PSW)	1/8" to 2" NB
TYPE	Round as per ANSI B 16.11. Reducing couplings in all combinations available Socket Weld to Screwed Coupling available upon request
PRESSURE CLASS	Up To 9000 psi
MOC	SS316, 304/Alloy 400, 600, C276/ CS/ AS etc
Model No Designator (*)	MOC*-PCSW-SIZE1*-SIZE2*-Class



Pipe Elbow Screwed / SW (PES)

End Connections	FPT/ SW
SOCKET WELD PIPE SIZE (SW)	1/8" to 3" NB
FEMALE PIPE THREAD SIZE (FPT)	1/8" to 2" NPT (Taper) Threads (BSPP/ BSPT/ ISO/ Metric or any other types upon request)
TYPE	Round as per ANSI B 16.11.
PRESSURE CLASS	Up To 9000 psi
MOC	SS316, 304/Alloy 400, 600, C276/ CS/ AS etc
Model No Designator (*)	MOC*-PE-SIZE1*-SIZE2*-Class



Pipe Tee Screwed / SW (PTS)

End Connections	FPT/ SW
SOCKET WELD PIPE SIZE (SW)	1/8" to 3" NB
PIPE THREAD SIZE (MPT / FPT)	1/8" to 2" NPT (Taper) Threads (BSPP / BSPT / ISO / Metric or any other types upon request)
TYPE	Round as per ANSI B 16.11.
PRESSURE CLASS	Up To 9000 psi
MOC	SS316, 304/Alloy 400, 600, C276/ CS/ AS etc
Model No Designator (*)	MOC*-PT-SIZE1*-SIZE2*-Class



Pipe Union Screwed (PUS)

End Connections	FPT / MPT / SW
SOCKET WELD PIPE SIZE (SW)	1/8" to 2" NB
PIPE THREAD SIZE (MPT / FPT)	1/8" to 2" NPT (Taper) Threads (BSPP / BSPT / ISO / Metric or any other types upon request)
TYPE	Soft Seal type or Metal to Metal Seal Type
TEST PRESSURE	Up to 9000 psi
SEAL RING	Viton/ Nitrile/ PTFE
MOC	SS316, 304/ Brass/ Alloy 400, 600, C276/ CS etc



Flanges

TYPE	Socket Weld, Screwed, Slip On, Blind, Weld Neck, Special
FACE TYPE	RF / FF / Tongue & Groove Type
SIZE / CLASS	Up to 24" / 150# to 2500#
SPECIFICATION	ANSI B 16.5
SEALING SPECIAL FLANGES	Flat Face, Raised Face, Tongue & Groove
MOC	SS316, 304 / Alloy 400, 600, C276 / PTFE / CS / AS etc



Condensate / Seal Pot (CP)

END CONNECTIONS	FPT / SW
PIPE SIZE	1.5" to 4". Sch.40 to Sch. XXS
PIPE THREAD END CONN (FPT)	1/4" to 2" NPT (Up to 9000 psi) (BSPP / BSPT / ISO / Metric or any other types upon request)
DRAIN PLUGS	Hex plugs provided optionally Length of Pipe / Pipe Schedule to be specified.
SOCKET WELD END CONN (SW)	1/4" to 2" NB (up to 9000 psi)
TYPE	3 Way / 4 Way. IBR Certificate Optional
MOC	SS316, 304 / Alloy 400, 600, C276 / CS / AS etc.



Syphon (SY)

END CONNECTIONS	MPT / FPT / SW / PLAIN
PIPE SIZE	Up to 1/2" (Sch.40 to Sch. XXS)
PIPE THREAD END CONN (FPT)	1/4" to 1/2" NPT (Up to 9000 psi)(BSPP / BSPT / ISO / Metric or any other types upon request)
SOCKET WELD PIPE SIZE (SW)	1/4" to 1/2" NB (up to 9000 psi)
TYPE	U Type, Q Type
MOC	SS316, 304 / CS / AS etc



Snubber (SNB)

END CONNECTIONS	MPT / FPT
PIPE THREAD END CONN (FPT)	1/8" to 1/2" NPT (Taper) Threads (BSPP / BSPT / ISO / Metric or any other types upon request)
TEST PRESSURE	Up to 6000 psi
MODEL NO DESIGNATOR (*)	MOC*-SNB-INLET*-OUTLET*
TYPE	Hexagonal. All combinations available
MOC	SS316, 304 / Brass / Alloy 400, 600, C276 / CS etc



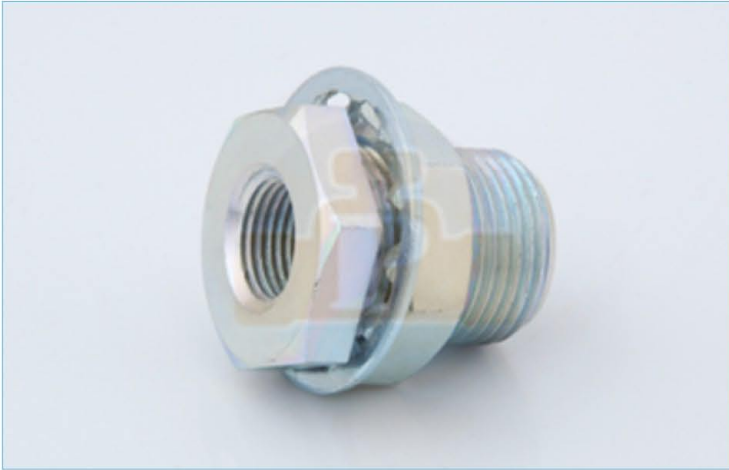
SS Tubing / Impulse Tubing SS Pipes

Size	1/16" to 2" OD
THICKNESS	As per specification
LENGTH	Random Straight Lengths of 4 to 7 Mtrs. Coiling Possible for smaller Size Tubing Optionally PVC Insulation can be Provided Soft Fully Annealed Seamless
GRADES	ASTM A 269 / A 213 etc.
MOC	SS 304 / 304L / 316 / 316L / 321, Monel, etc.
Model No Designator (*)	MOC*-PU-SIZE1*-SIZE2-CLASS



PTFE Tubing / Fittings / Valves

Details	RANGE OF PRODUCTS SUITABLE FOR HIGHLY CORROSIVE APPLICATIONS PTFE TUBE SUITABLE FOR COMPRESSION TYPE FITTINGS PTFE COMPRESSION TYPE TUBE FITTINGS, WITH NUT FERRULES. PTFE FLANGES
TEST PRESSURE	Up to 150 psi
PTFE NEEDLE VALVES	Type: TOD / FPT / MPT Size: From 1/4" to 1" From 6mm to 25mm
PTFE MANIFOLD VALVES	2, 3 & 5 Valve. R / T Type.
PTFE PIPE FITTINGS	Nipple, Plug, Coupling etc. Size: From 1/4" to 1"
PTFE COMPRESSION TYPE TUBE FITTINGS	Single / Double Ferrule Fittings. Size: From 1/4" to 1". From 6mm to 25mm
PTFE FLANGES	Screwed & Blind. Size: Up to 4"
PTFE TUBE	Suitable for Compression type Fittings. Size: From 1/4" to 1". From 6mm to 25mm



We are manufacturer, supplier and exporter of complete range of Brass Compression Fittings such as Compression Connectors, Union Joint, elbow fittings, Olive Union, Compression Tees, Reducing Elbow, Bulkhead Union, Olive Elbow Assembly, Branch Tee, Olive Nut, Compression Nuts, Compression Adaptor, Sleeve, Compression Olives, Brass Pneumatic Fittings, P U Connectors, Four Way, Compression Elbows, Union Elbows, Union Fittings, Olive Fittings and any kind of Brass Component can be developed as per customer's specifications

Material :	Free Cutting Brass IS 319 Type (I) or BS 249 Type (I) or High Grade Any Special Brass Material Composition as per customers requirement Stainless Steel Turning Grades like 303, 304 etc Mild Steel Grades like EN 1A (BS 970 230M07) etc Aluminium Turning Grades like 1070 etc
Threads	ISO Metric MM, PG, BSW, BSP, BSB, BSF, BA, NPT, NPTF, UNC, UNF, UNEF etc Almost any threads as per custom specification.
Size	As Per Customer Specification
Finish	Natural, Nickel Plated, Tin Plated, Natural Brass, Electro-Tin, Chrome or any coating as per customer requirements.



Committed To Quality.

Prince Components supplies only industrial quality products designed to stand up to the most rigorous applications. We get our raw material & products certified by accredited laboratory and the rigorous testing requirements of our numerous products are conducted under the watchful eye of the certifying bodies.

Continuous improvement is an ongoing process at Prince Components. We have streamlined our quality assurance program to meet the ISO 9001:2015 standards. By implementing new and advanced stages to our inspection, testing and packaging procedures, our quality control system will meet or exceed ISO requirements and our customer's needs. All products made or received by Prince Components are subjected to thorough testing and inspections. We calibrate measuring instruments certified by NABL accredited laboratories.

Each component produced at Prince Components follows stringent quality procedures and vigorous quality checking at all stages of manufacturing cycle to ensure that near zero defect components are supplied to our valued customers. To support our near zero defect component manufacturing philosophy, we train all our staff on



Quality Assurance

Quality Control



After product produced, it has been send to QC Department. Quality Control Supervisor will check all dimensions and Measurements on the basis of various quality checking methods. If reports are under required tolerance then material will send to packing department.

Testing & Inspection



Our Inspection Department has a comprehensive stock of gauges, micrometers, together with material testing facilities. The finished products are tested on different quality parameters such as dimensional accuracy, durability and strength.

Packing



Each order is directed to a particular packing location. The completeness of whole order can be checked here optionally. Than the packing list gets printed to be included into the packing and the whole order is packed and dispatched.



Prince Components

Brass Fitting Components

📍 Plot No. 4089, Road No I, Phase-3,
Dared, Jamnagar - 361004,
Gujarat - INDIA

📞 +91 82008 66229
✉️ inquiry@prince-component.com
🌐 www.prince-component.com

